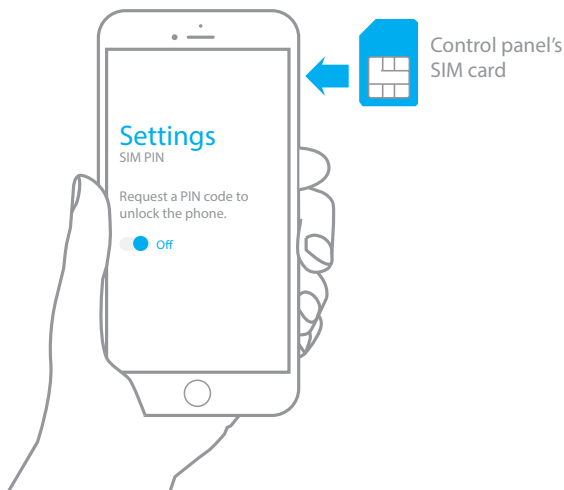


Quick Start Guide

S3b Sim Secual / S3b Sim Vid Secual

www.etiger.com

EN

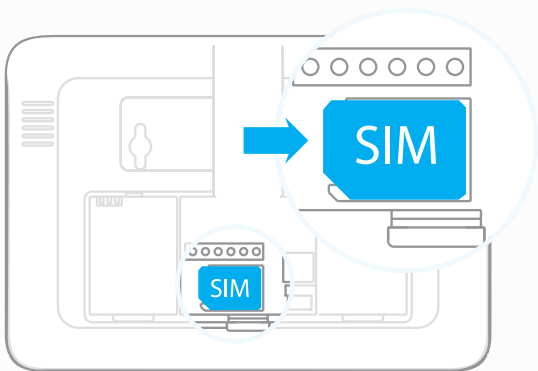


Disable the security of your control panel's SIM card

The S3b control panel interacts with you thanks to a SIM card (sold separately). Before inserting your SIM card in the control panel, make sure the SIM security is off. To proceed, insert the SIM card in a mobile phone, browse the settings of the phone and make sure the SIM card is unlocked (the PIN code may be required to unlock the SIM card).

A piece of advice

For your control panel's SIM card, we advise you to choose a plan with unlimited text and 1 or 2h voice.

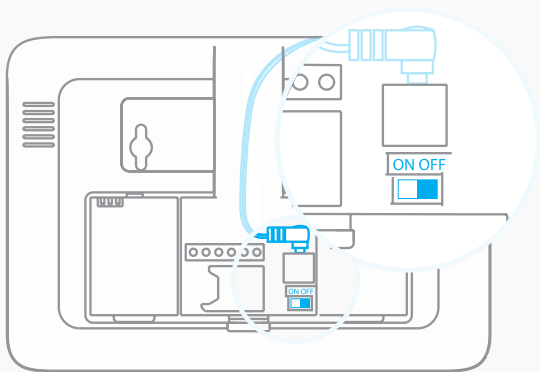


Insert the SIM card in the control panel

Open the battery compartment at the back of your control panel and insert the SIM card in the control panel's SIM card slot.

Attention

Insert the SIM card according to the shape of the SIM card slot.

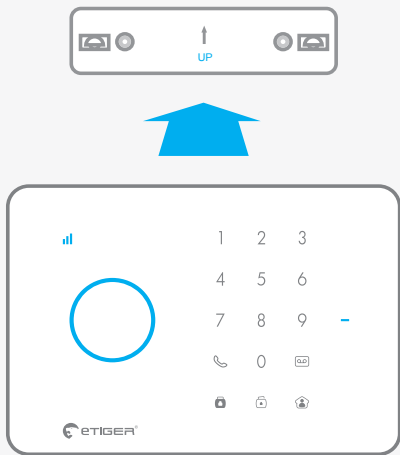


Turn the control panel on

Plug the AC adaptor to an AC socket. Plug the output connector of the AC adaptor into the adaptor interface in the battery compartment at the back of the control panel. Turn the power switch to “ON” and put back the cover of the battery compartment. The control panel is turning on.

Attention

Make sure you have inserted a SIM card in the control panel before turning it on.



Mount the control panel on a wall

Screw the wall mount onto the wall where you wish to install your control panel. Fix the control panel on the wall mount.

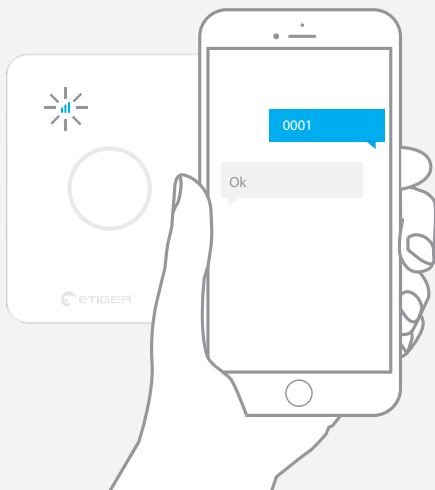
A piece of advice

Make sure the control panel is firmly fixed on the wall mount. Because of the tamper switch, the alarm rings out if the control panel is separated from the wall mount.

Before mounting the control panel, make sure the GSM signal is sufficient: make a phone call to your control panel's SIM card. Once you are through, press **1234#** and then **1** on your phone. If this operation arms your system, the GSM signal is sufficient. If nothing happens or if you go to voice mail, the GSM reception is not sufficient.



Blinks once every second: searching GSM network
Blinks once every two seconds: GSM reception is ready




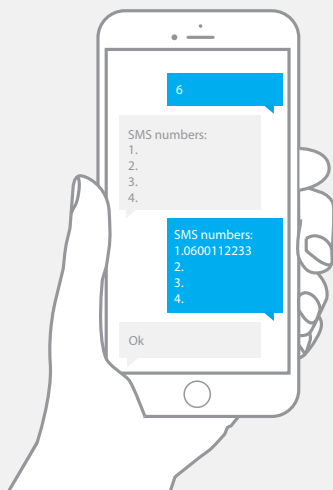
Change the system language

Send "0001" by SMS to the control panel to set the system language to English.

The control panel replies "Ok" as a confirmation.

Attention

Before sending the SMS, make sure the GSM reception is ready. The reception is ready when the indicator  blinks once every two seconds.



Register your phone number(s)


This step enables you to define the phone number(s) to which an SMS is sent when the alarm is triggered. Only stored numbers can control and configure the system.

Send "6" by SMS to the phone number of the SIM card in the control panel. The control panel replies with a SMS containing every phone number registered.

Copy and paste this SMS and edit it so to add your phone number(s). Then send the SMS back to the control panel. The control panel replies "Ok" as a confirmation.

Advanced settings

Connect more accessories

On the control panel, type your access code (default code: 1234) followed by the key : your control panel is now in Connection mode.

Within the next 15 seconds, trigger the accessory you wish to connect (for a RFID tag, swipe it in front of the RFID reader of the control panel). You hear one beep: the accessory is registered.

A piece of advice

Save time and register your accessories using the Connection Assistant in the "Support" section of our website (www.etiger.com).

Change the access code

Do not forget to change your access code. To change your access code, send "13" by SMS to the control panel.

Advanced setup

For more settings, please refer to the user manual of the control panel, available for download on www.etiger.com/eu/support




In compliance with European laws. This product is in compliance with the essential requirements and other relevant provisions of Directive 1999/5/EC.
Manufactured in China.

Memo

Detach it and keep it with you at all time

SIM card's phone nb. >

Memo		
		
by SMS	Arm the system	1
	Disarm the system	0
	Home Mode	2
	System status	00
by phone call	Arm the system	1
	Disarm the system (stop the siren automatically)	0
	Start audio surveillance (stop the siren automatically)	*
	Start the conversation	3
	Start the siren	9
	Stop the siren	6

To enable the control by phone call, please refer to the user manual available for download at www.etiger.com

A piece of advice

Save time and use our Android and iOS apps to interact with your control panel.



eTIGER Europe

18/C, Rue des Procureurs
7500 Tournai, Belgique
service@etiger.com